



2025

CERTIFICATION

Certified Risk Modelling Expert (CRME)-GAFM

by International Board of Standards of the
GAFM® Global Academy of Financial Management®



RADIAN

PT Radian Wicobs Internasional / www.RADS.CO.ID



Content

1/

Introduction

2/

CRME

- Certification Background
- Objectives Program
- Target Audience

3/

Training and Certification

- Training & Certification Requirements
- Program Delivery Approach
- Examination Process
- Benefit Program
- Training Module

4/

Instructor CRME

Introduction

01



The Role of IBS and GAFM® in Professional Certification and Accreditation



Education and career development standards are evolving globally, with graduate credentials becoming essential across various industries, including government, military, construction, and technology. Unlike traditional educational bodies that offer general diplomas, the International Board of Standards (IBS) focuses on certified programs that allow professionals to specialize while earning graduate credentials. Founded by industry leaders, IBS aims to enhance accreditation in graduate management education by collaborating with accredited programs that provide exams and courses. Instead of offering broad designations for entry-level diploma holders, IBS has developed a graduate-level approach, ensuring that professionals meet high standards of education and capability for leadership and executive roles in business management.

IBS has experienced rapid global expansion, forming alliances and authorized operations across the USA, Middle East, India, Caribbean, South Africa, Eastern Europe, and Asia. Its certification model is unique, integrating top business schools, ISO-certified programs, and partnerships in over 100 countries. With membership now spanning 140+ nations, IBS continues to grow, particularly in Europe, Asia, and Africa. Collaborations with Fortune 500 executives and companies play a crucial role in shaping the practical direction of its programs, addressing key staff development and time management needs. Together, IBS is committed to **“Building the World’s Future Leaders in Business Management”™.**



Accreditation



Standard Institution



Certification bodies recognized by SOEs must be accredited and comply with both national and international standards



Certification by



Compliance with SK-3/DKU.MBU/05/2023: Qualifications and Composition of Risk Management Bodies

In accordance with the Technical Guidelines on the Composition and Qualifications of Risk Management Bodies within State-Owned Enterprises (SOEs), as stipulated in SK-3/DKU.MBU/05/2023, it is stated that the Risk Management Body appointed by SOEs and their subsidiaries must meet the required composition and qualifications, including:

- ✓ Certification, integrity, and attitude requirements that must be fulfilled before assuming the position; and
- ✓ Training and certification requirements that must be fulfilled while holding the position.

The Risk Management Body of SOEs and their subsidiaries that must meet these qualifications includes:

- ✓ The Board of Commissioners/Supervisory Board, Board of Directors, Director in charge of Risk Management, Director in charge of Financial Management, and the Integrated Governance Committee.
- ✓ Members of the Audit Committee and members of the Risk Monitoring Committee who are external to the Board of Commissioners/Supervisory Board.
- ✓ Internal Audit Unit (SPI).


The fulfillment of certification qualifications required while holding the position must be completed within one (1) year of assuming the role as a member of the Risk Management Body.

Certified Risk Modelling Expert (CRME)- GAFM®

02



Certification Background



In an increasingly complex and uncertain business environment, risk modeling and management have become essential components of effective decision-making. This course provides participants with a comprehensive understanding of the fundamental concepts of risk, including uncertainty, vulnerability, resilience, and decision-making under uncertainty. By covering a broad spectrum of risk areas—ranging from enterprise risk management and financial risk to operational, cyber, and climate risks—participants will develop a practical, real-world understanding of how risk models inform business strategies. The course will emphasize the role of risk aversion in decision-making and introduce various modeling techniques, such as linear and nonlinear optimization, expected utility models, and stochastic dominance, to equip professionals with the tools needed to manage uncertainty effectively.

With a strong focus on hands-on learning, this course will integrate theoretical frameworks with industry applications and case studies from multinational corporations. Participants will gain expertise in using optimization methods, software tools, and advanced analytics to assess risk factors and develop robust decision-making strategies. Through interactive exercises and real-world examples, delegates will acquire the capability to apply risk modeling techniques in business environments, enhancing their ability to analyze complex data and make well-informed strategic decisions. By the end of the program, participants will have the confidence and technical proficiency to navigate the evolving landscape of risk management, ultimately contributing to the resilience and success of their organizations.

Objectives Program



Reflect on risk models, their uses and limits.
Identify and formulate a risk analysis problem with quantitative methods in a particular field (e.g. natural catastrophes).

Understand what is expected of 21st century risk managers in various contexts.

Describe the qualities that an efficient risk manager must possess to excel in their role.

The ability to recognize risk and model it in a mathematical way

The ability to formulate and solve an appropriate decision problem. Modeling assignments- participants develop these skills and knowledge through the course

Based on: Chapter Learning Objectives. American Academy of Financial Management®.2024

Target Audience

SOE / BUMN

- Board of Commissioners or Supervisory Board
- Audit Committee and Risk Oversight Committee Members
- Internal Audit Unit

- Top Management
- All Levels of Management
- A quantitative background is highly recommended

PRIVATE COMPANY

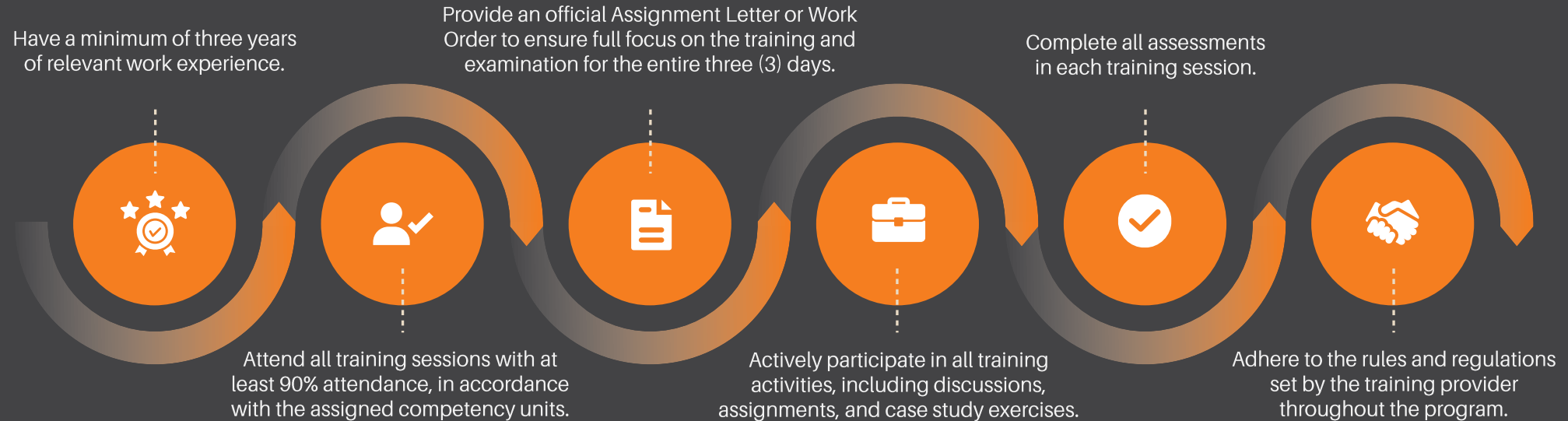
Training and Certification

03



Participant Requirements and Commitments

Participants are required to:



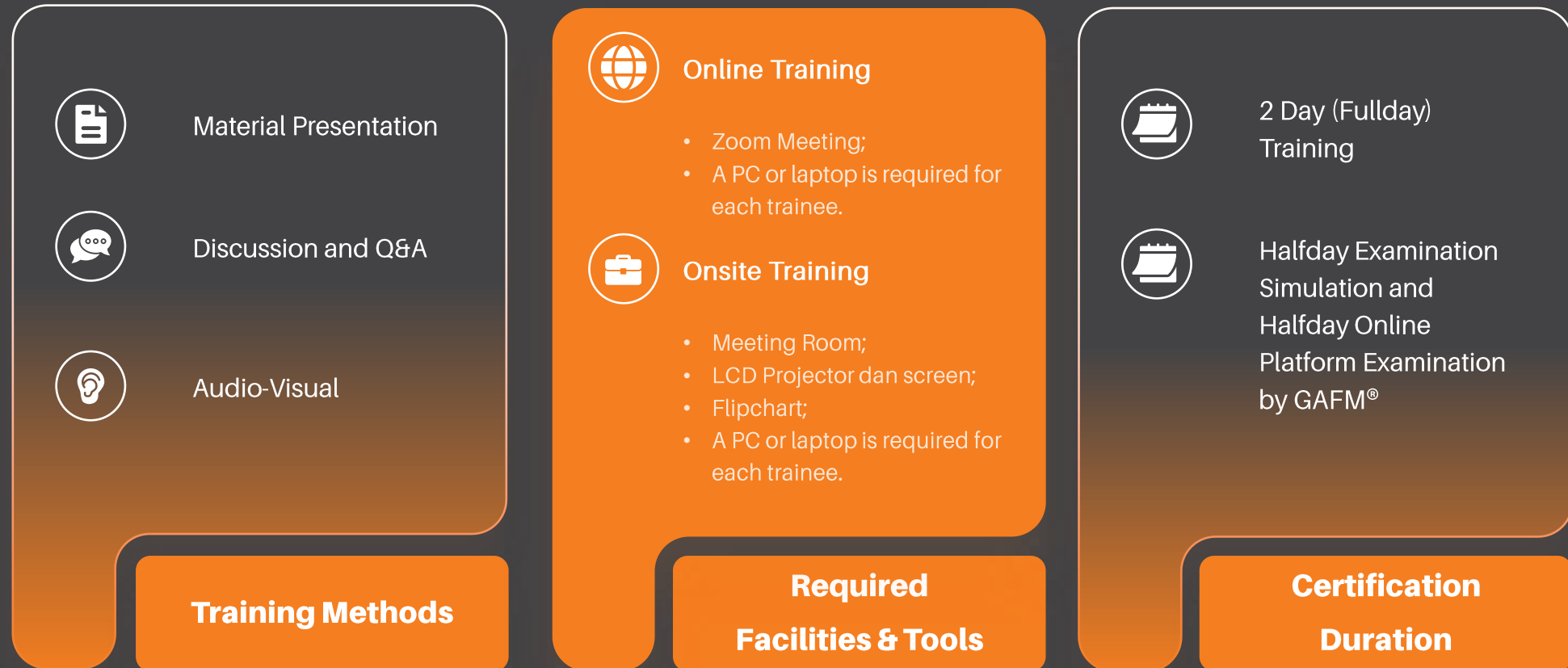
Failure to comply with these requirements may result in:

The participant not receiving a certificate of completion or proof of training participation, which is a prerequisite for the CGRCS® certification exam.

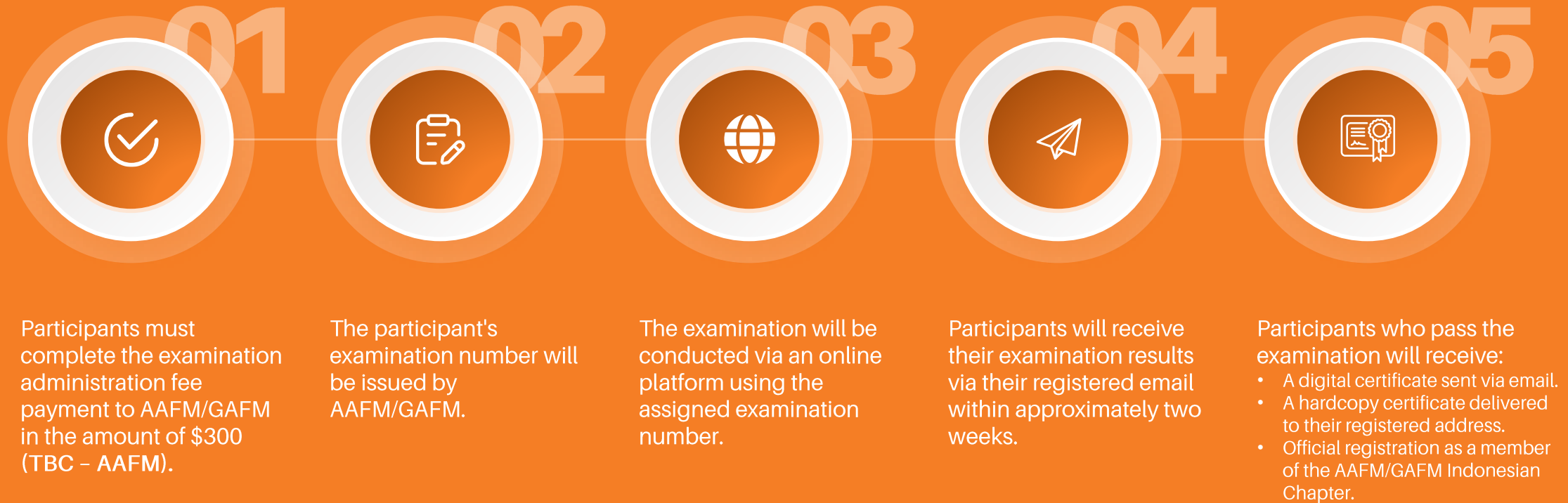
The participant being recorded as having not completed the training.

Participants will be required to agree to these terms and conditions as a commitment to fully completing the training, which is a mandatory requirement for CGRCS® certification qualification.

Program Delivery Approach



Examination Process



Notes

- The examination can be taken in either Bahasa Indonesia or English.
- The passing grade for the examination is 70.

Benefit Program



Training, Examination
Preparation, and Forum
Group Discussion



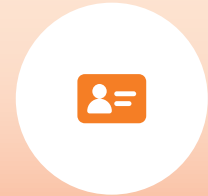
Training Certificate and
Certification from GAFM®



Training Module
and Lifetime Access



Additional Materials in
Compliance with
PER-2/MBU/03/2023



Membership in
AAFM and GAFM®

Activity Rundown - SK 03

Day 1: Fundamental Concepts and Introduction to Risk Modelling

Session 1

Fundamentals of Risk Modelling and Regulatory Frameworks

- Overview of risk modelling principles
- Importance in decision-making and strategic planning
- Key regulatory frameworks: Introduction to PER-2/MBU/03/2023

Session 4

Monte Carlo Risk Simulation and Bayesian Statistics

- Principles of Monte Carlo Simulation
- Bayesian statistical approaches in risk assessment
- Compliance with PER-2/MBU/03/2023 risk simulation requirements

Session 2

Quantitative Risk Measurement Techniques

- Value at Risk (VaR) and Average Value at Risk (AVaR)
- Coherent measures of risk
- Compliance considerations based on PER-2/MBU/03/2023

Session 5

Case Study and Practical Exercise

- Identifying and modelling key risk factors
- Hands-on Monte Carlo simulation exercise
- Evaluating case studies based on PER-2/MBU/03/2023

Session 3

Duality in Optimization and Stochastic Modelling

- Duality in linear programming and applications
- Introduction to stochastic modelling
- Regulatory impact on risk measurement methods

Session 6

Discussion and Q&A

- Open discussion on challenges in risk modelling
- Group analysis of case studies
- Addressing participant queries

Activity Rundown - SK 03

Day 2: Advanced Risk Simulation and Portfolio Optimization

Advanced Analytical Tools for Risk Assessment

Session 7

- Statistical analysis and forecasting models
- Compliance with financial risk assessment regulations

Real Options Valuation and Super Lattice Solver (SLS) Application

Session 10

- Theory and business applications of real options analysis
- Application using SLS in risk-based decision making
- Alignment with PER-2/MBU/03/2023 on strategic investment risk

Optimization Techniques and Portfolio Selection

Session 8

- Optimization in risk modelling
- Project portfolio selection and optimization
- Regulatory guidelines on portfolio risk assessment

Risk Model Design, Assessment, and Validation

Session 11

- Best practices in risk model design
- Market and credit risk assessment
- PER-2/MBU/03/2023 validation standards

Predictive Modelling and Business Intelligence

Session 9

- Machine learning approaches in risk forecasting
- Business Intelligence and Data Science analytics
- Compliance with PER-2/MBU/03/2023 requirements

Case Studies, Final Exercise, and Assessment

Session 12

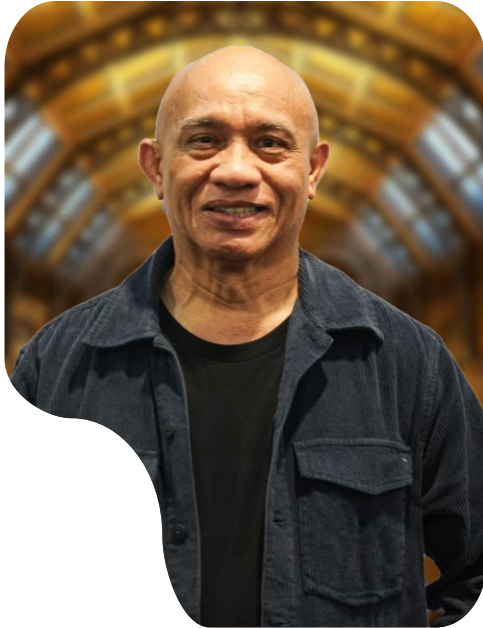
- Real-world applications of risk modelling
- Hands-on modelling exercise with risk simulation
- Exam exercises and evaluation based on PER-2/MBU/03/2023 compliance

Instructor (CRME)-GAFM®

04



Trainer's Profile



Deddy Jacobus

Drs., MBA, CCSA, ERMCP, CRMA,
QCRO, LA BCMS, CRP, ESG Cert,
CEIP



- Senior Partner, Risk Workshop International (JPM & Partners), Jakarta, INA
- Registered Member of OCEG, International Governance, Risk and Compliance (GRC) Professional Organization, Arizona, US
- Certified Member of Lembaga Komisaris dan Direktur Indonesia (LKDI), Jakarta, INA
- Certified Member of Indonesia ISO Expert Association (IIEA), FG ISO 22301 BCMS, Jakarta, INA
- Certified in Risk and Control Self-Assessment (CCSA), IIA, Florida, US
- Certified Risk Management Assurance (CRMA), IIA, Florida, US
- Certified Enterprise Risk Management Professional (ERMCP), ERMA, Singapore
- Certified Lead Auditor ISO 22301 BCMS, IRCA, UK
- Certified ESG and Investing Professional (CEIP), AAFM American Academy of Financial Management, US
- ESG Risk and Opportunity Certification, The Wharton School, University of Pennsylvania, US
- MBA, Risk Management, Universitas Gadjah Mada, Yogyakarta, INA
- More than 20 years experience in Risk Management Consulting

Trainer's Profile



Sorchan Simbolon

Dr, SPDP, CRP



- Consultant and Trainer, Risk Workshop International (JPM & Partners), Jakarta, INA
- Certified Risk Professional, Badan Nasional Sertifikasi Profesi, INA
- Doctoral dalam bidang HC Management
- Leadership Course, Global Movement, Washington DC, USA
- Sertifikasi Profesi Dana Pensiun, Lembaga Sertifikasi Profesi Dana Pensiun, INA
- Sertifikat Manajemen Umum Dana Pensiun, Perkumpulan ADPI, INA
- Dewan Pengawas Dana Pensiun
- Dosen Pasca Sarjana
- More than 10 years experience in Auditing and Risk Management Consulting
- Melakukan Layanan Konsultasi di 100+ Perusahaan (PT Telkommetra, PT HKI Group dan anak perusahaannya, PT Bank Mandiri Taspen, PT Waskita Realiti, PT PLN Batam, PT IFG Group, dsb)

Trainer's Profile



Hizkia Sutanto

SS.Pi, CRA, CRP
Sertifikat Pelatihan RMI KBUMN



- Consultant and Trainer, Risk Workshop International (JPM & Partners), Jakarta, INA
- Certified Risk Professional, Lembaga Sertifikasi Profesi Pasar Modal (LSPPM)
- Certified Risk Associate, Lembaga Sertifikasi Profesi Pasar Modal (LSPPM)
- Certified RMI KBUMN Training
- Sarjana Perikanan, Universitas Brawijaya, Malang
- More than 5 years experience in Risk Management Consulting and Training

Trainer's Profile



Eko Budi Utomo

S.E, CESGRO, CRP



- Member of Perkumpulan Profesi Telekomunikasi Seluler Ind
- Member of Business Network International
- Senior Consultant, Risk Workshop International (JPM & Partners), Jakarta
- Certified Risk Professional
- Level I Certification in Banking Risk Management
- Enhanced Leadership Skills through an Enrichment & Leadership Program for Managers at Prasetya Mulya University
- Bachelor's Degree in Economics from Diponegoro University
- 10 years experience in Risk Management, Risk Analysis and Modelling, Corporate Investment






Radian Wicobs Internasional

Radian Wicobs Internasional adalah perusahaan konsultan manajemen dan sistem informasi yang berdiri sejak 2013, dengan pengalaman lebih dari satu dekade. Kami spesialis dalam sistem informasi manajemen, tata kelola perusahaan (GCG), penilaian kematangan, pengembangan kompetensi, dan persiapan sertifikasi ISO.

Address

MyRepublic Plaza BSD Wing A Lantai
Dasar Zona 6
Jl. BSD Grand Boulevard, BSD Green
Office Park
Tangerang, 15345

Contact

 +6221 2922 2999
 08119769118
 corporate@rads.com



WWW.RADS.CO.ID

